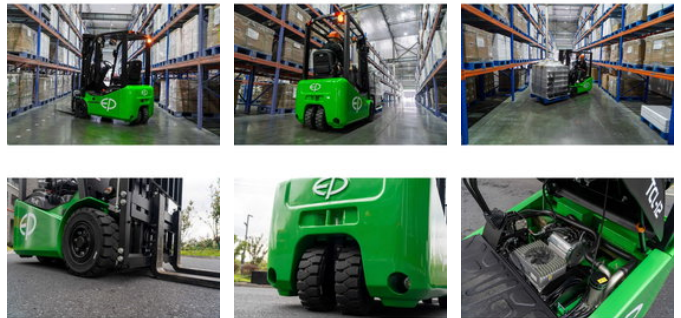


EP TCL152 - 4,5 meter - Triplex - Freelift - SideShift

General features

| | |
|-------------------|----------|
| Brand | EP |
| Subcategory | Forklift |
| Construction year | 2026 |
| Color | Green |
| Fuel | Electric |
| CE marking | Yes |



Characteristics

| | |
|--------------|---------|
| Empty weight | 2.698kg |
| Length | 279cm |

| | |
|------------------|---------|
| Width | 102cm |
| Lifting capacity | 1.500kg |
| Lifting height | 450cm |
| Mast type | Triplex |
| Clearance height | 205cm |

EP TCL152 - 4,5 meter - Triplex - Freelift - SideShift

Accessories