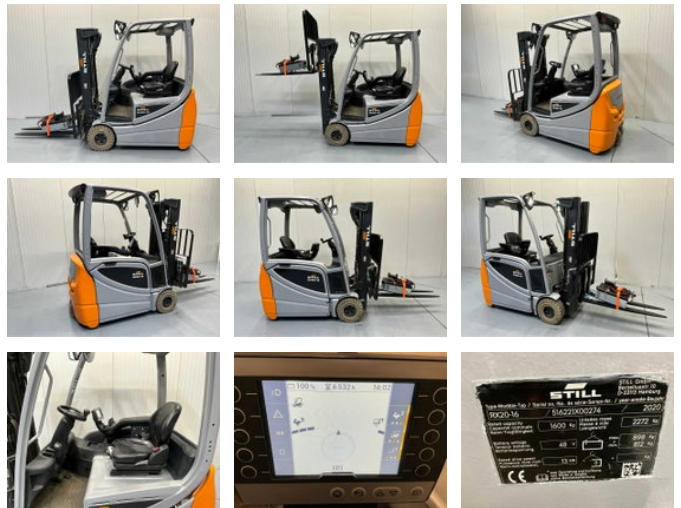


## Still RX20-16 Triplex - Freelift - Sideshift

### General characteristics

Brand	Still
Subcategory	Forklift
Year of construction	2020
Hours displayed	6532
Condition	Used
Reference	V3060



### Properties

Single weight	3.170kg
Length	320cm
Width	120cm
Max. lifting capacity	1.600kg
Lifting height	432cm
Mast type	Triplex
Clearance height	210cm

# Still RX20-16 Triplex - Freelift - Sideshift

## Accessories