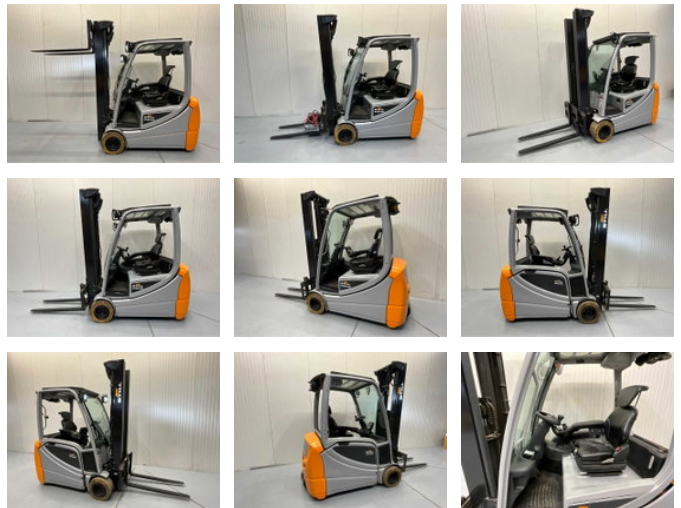


Still RX20-20 Triplex - Freelift - Sideshift - Acculader

General characteristics

Brand	Still
Subcategory	Forklift
Year of construction	2019
Hours displayed	9028
Condition	Used
Reference	V3049



Properties

Single weight	3.804kg
Length	320cm
Width	120cm
Max. lifting capacity	2.000kg
Lifting height	560cm
Mast type	Triplex

Still RX20-20 Triplex - Freelift - Sideshift - Acculader

Accessories