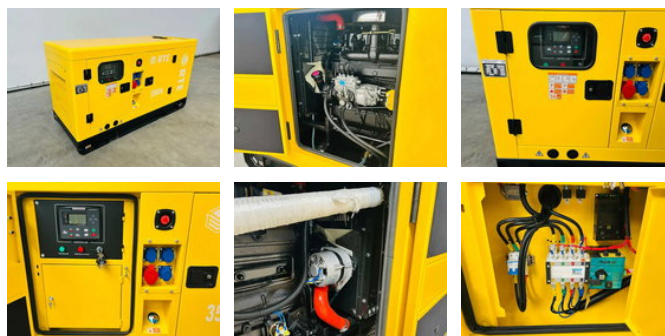


RTE 35KVA - Noodstroomaggregaat / generator

Algemene kenmerken

Merk	RTE
Subcategorie	Standaard aggregaat
Bouwjaar	2026
Brandstof	Diesel



Eigenschappen

Ledig gewicht 710kg

RTE 35KVA - Noodstroomaggregaat / generator

Omschrijving

rated output 28kw/35kva; stand-by 30.8kw/38.5kva; 50HZ P.F. 0.8; RPM 1500; 3 PHASE; Genset controller met LCD; 72L dieseltank; Olietank 13L; 2 accu's; ATS 100A Aisikai; 4 cilinder; Type motor 4-Stroke, V In-line, Water Cool, Electric start; Displacement (L) 3,76; v.v. CE en QC;7310

Accessoires